

Service  
Service  
Service



Philips Consumer Lifestyle

# Service Manual

## PRODUCT INFORMATION

- This product meets the requirements regarding interference suppression on radio and TV.
- After the product has been repaired, it should function properly and has to meet the safety requirements as officially laid down at this moment.

## TECHNICAL INFORMATION

- Adapter AC / DC : 8.5 V DC - 300 mA
- Rechargeable batteries : 4 x NiMH - 1500 mAh
- Run time : 8 min.
- Charging time : 16-18 hours
- Charge indicator : LED
- Charging base : Standing, also wall mountable, incl. accessory storage
- Accessories : Crevice, brush and Squeeze
- Application environment : Wet & Dry
- Filter : Single, washable
- Dust chamber : Dry : 400 ml  
: Wet : 130 ml

## REPAIR INSTRUCTIONS

- No specific issues

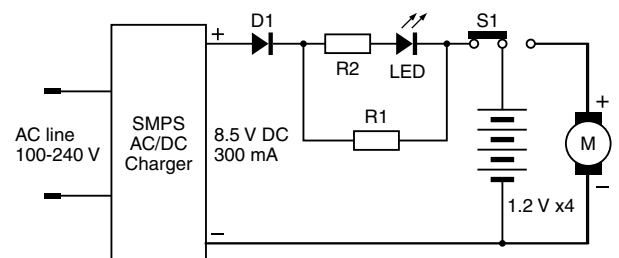
## ASSEMBLY & DISASSEMBLY ADVICE

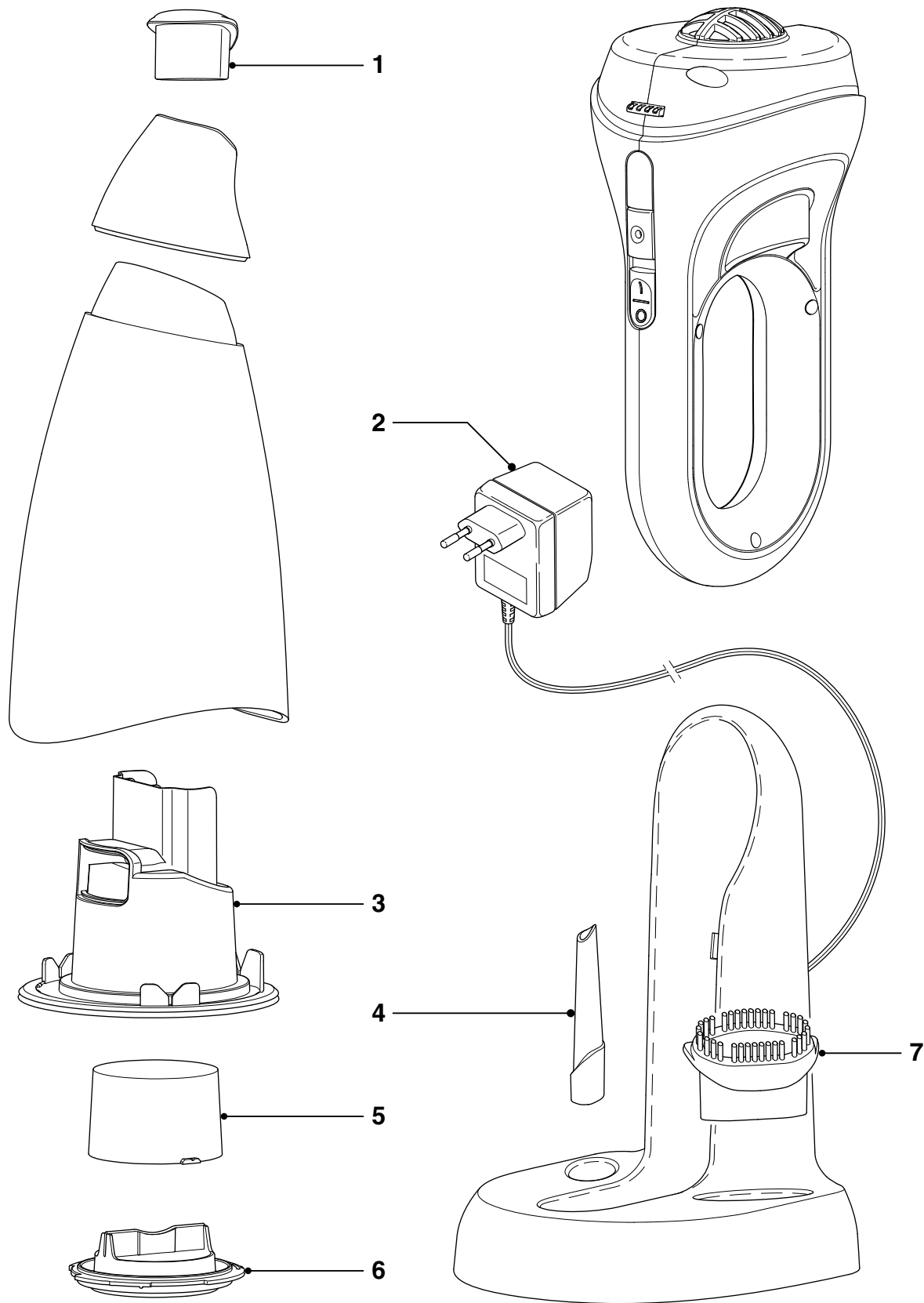
- No specific issues

## OPTIONAL (accessories)

- No specific issues

## Electrical diagram





Pos	Service code	Description
1	4222 459 45079	Squeeze
2	4222 459 45973	Adapter UK/HK
3	4222 459 45080	Deflector
4	4222 459 45075	Crevise Nozzle

Pos	Service code	Description
5	9965 000 25379	Inner filter
6	4222 459 45081	Filter holder
7	4222 459 45076	Brush nozzle